



INTCAMPOR02

Specification & Installation

Main specification

1. Input Spec. (VIDEO INTERFACE)

- 1 x Analog R,G,B, C sync
- 1 x CVBS(REAR CAMERA) Input. (Rear camera source)
- 3 x A/V (NTSC & PAL) Input.
- 1 x LCD Input (Car system Input)

2. Output Spec.

- 3 x Audio Select (12V power comes out from 3 wires of cable by A/V1, Navigation, Rear mode)
- 1 x Audio OUTPUT
- 1 X LCD OUTPUT(LCD Operation)

3. Power Spec.

- Input Power: 10VDC ~ 16VDC
- Consumption Power: 2WATT in maximum level

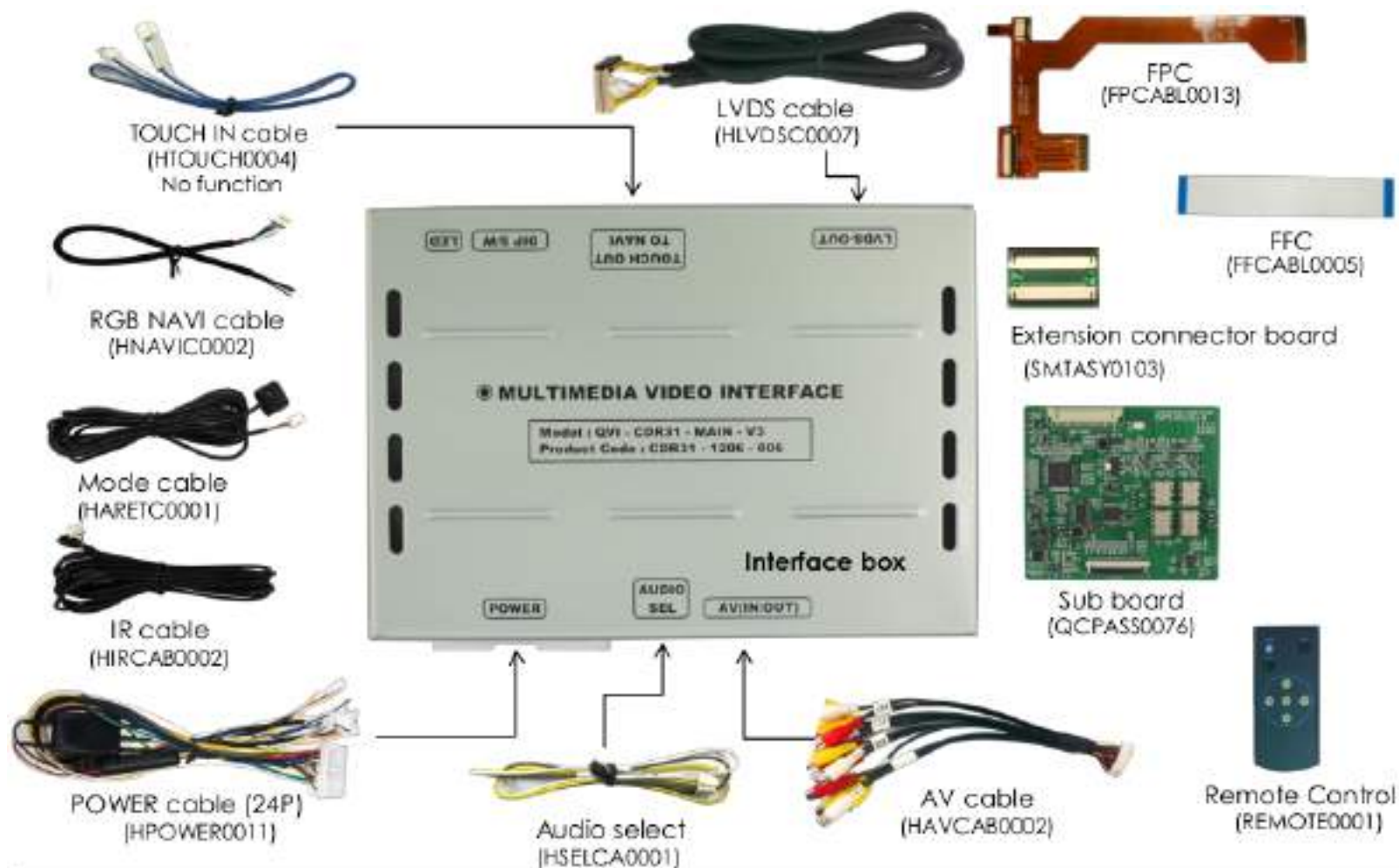
4. Switching mode

- Skip function of input video: Able to skip each input source via adjusting DIP switch.
- Control by using the remote controller.
- Able to change a mode to another by using the mode switch.
- Able to change modes and get back to the OEM screen through the genuine buttons.

Features

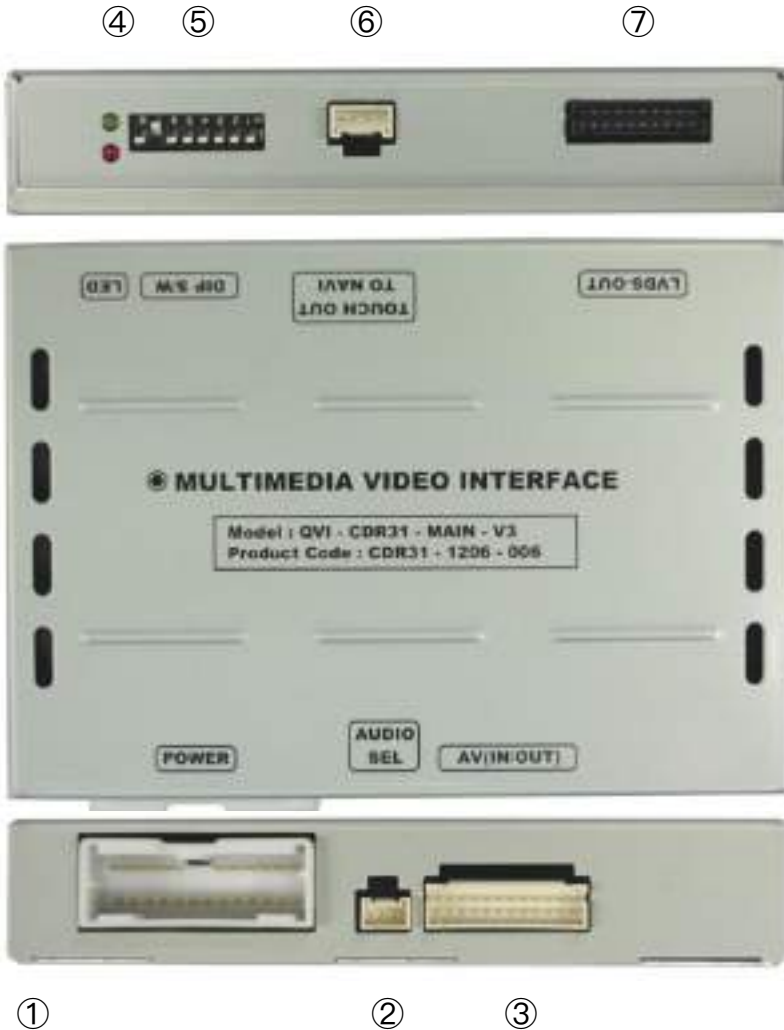
- Plug & Play (LVDS cable enclosed)
- Able to position DVD, Navigation screen by itself
- Improvement in screen display (Interface intended for user convenience)
- Remote controller enclosed
- Able to change a mode to another via the mode switch
- Control of DVD, DTV via Touch OSD

Components



Manual Exterior

Shadow MULTIMEDIA



Dimension

Horizontal length 127mm
Vertical length 90mm
Height 24mm

- ① POWER
- ② AUDIO SEL
- ③ AV (IN/OUT)
- ④ LED
- ⑤ DIP S/W
- ⑥ TOUCH OUT TO NAVI
- ⑦ LVDS-OUT

Sub board

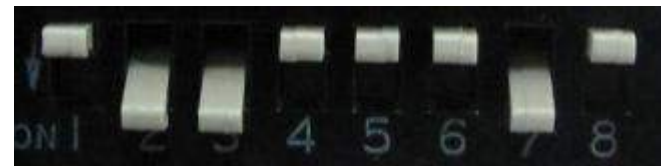


- ⑧ LVDS(TO NAVI)
- ⑨ LCD(IN/OUT)

DIP switches

#PIN	FUNCTION	DIP SW Selection
1	RGB INPUT	ON: Deactivated
		OFF: Activated
2	A/V 1 SKIP	ON: Deactivated
		OFF: Activated
3	A/V 2 SKIP	ON: Deactivated
		OFF: Activated
4	A/V 3 SKIP	ON: Deactivated
		OFF: Activated
5		N.C.
6		N.C.
7	Rear Mode	ON: After-market rear-view camera
		OFF: Factory rear-view camera
8	No function	Set ON

※ ON: DOWN, OFF: UP



※ Please make sure to disconnect the power cable of the interface and reconnect the power cable again to apply the dip switch setting whenever changing DIP switch. Otherwise, DIP switch setting will not be applied.

Remote controller

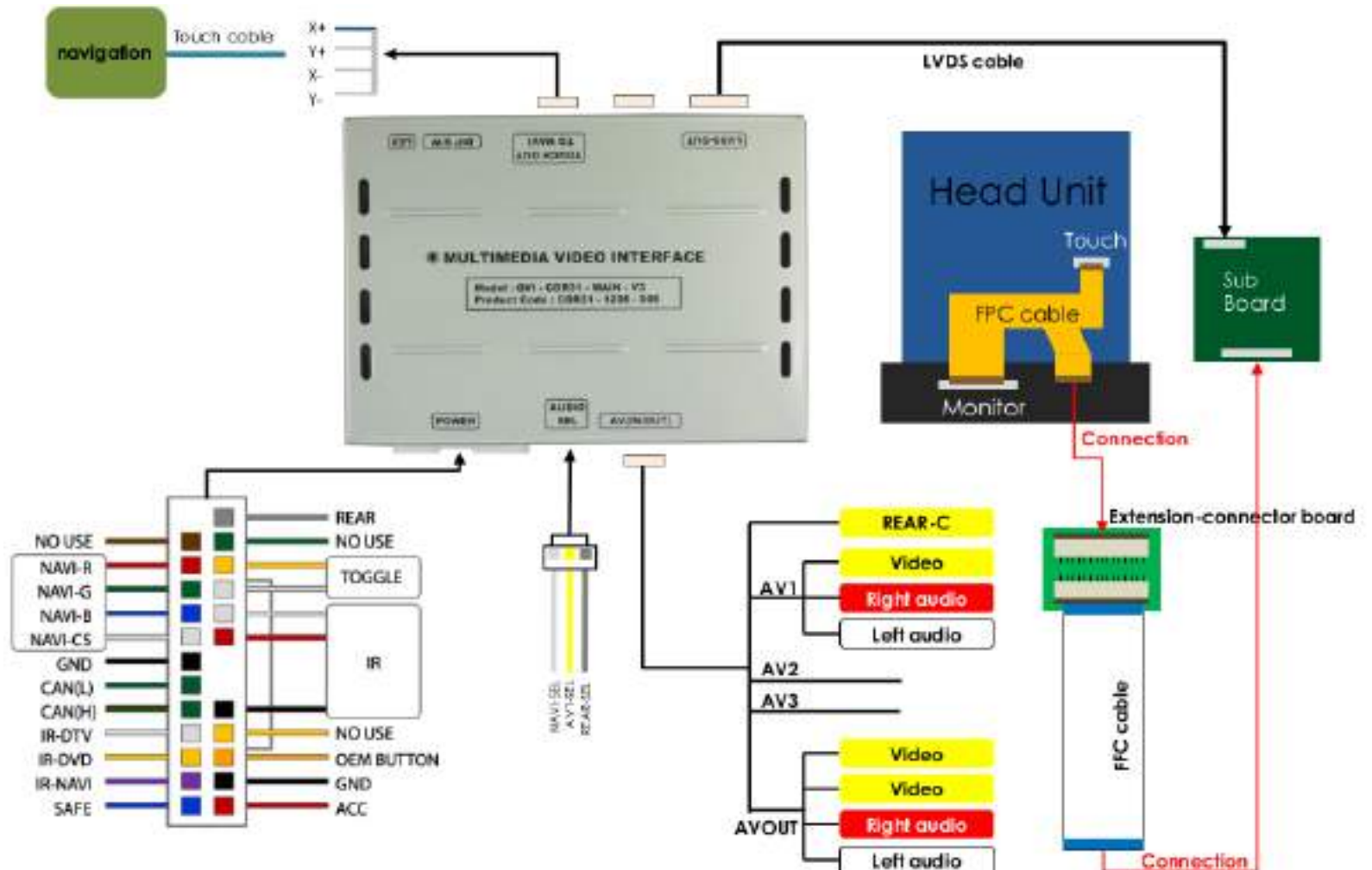
▲ Key Function

Key	Function
POWER & PIP	No function
MENU	OSD MENU
OK	Confirm selection
▲	Up
▼	Down
◀	Left
▶	Right



To enter FACTORY OSD menu, press ◀ for 2 seconds.

Installation diagram



Cautions on installation

- Ignition key should be taken off before starting installation, interface power connection must be the last step in installation.
- Power cable should be separated when connecting interface.
- Should be no any electronic devices or magnetic pole around installation place.
- All steps of installation should be done by well-trained specialist.
- Dismantling without manufacturer's permission can not be guaranteed, (No permission to break attached label on the board.)
- Kindly check all parts are in the box, when receiving the product, if anything missing, inform to the supplier or manufacturer.
- According to our sales policy, any problems caused by user's mistake, careless can not be guaranteed.
- It may not work on a camera with 12V

Installation

Connection with SUB board



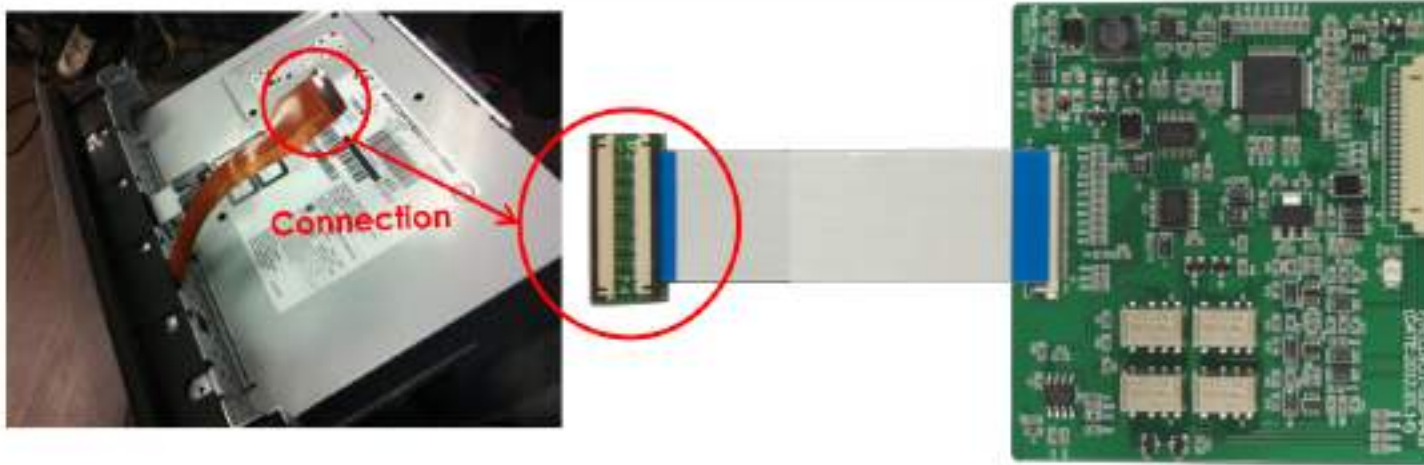
① Divide two cables in the marked areas after separating the front part of the head unit.



② Connect the FPC cable (enclosed in the package) after separating the original FPC cable as shown left.

Installation

Connection with SUB board



-
- ③ Connect the head unit after connecting the FFC cable. Connect the end of the FFC cable to one side of the extension-connector board. And then connect the FFC cable to the other side of the extension-connector board.
 - ④ Connect the other end of the FFC cable to the SUB board.

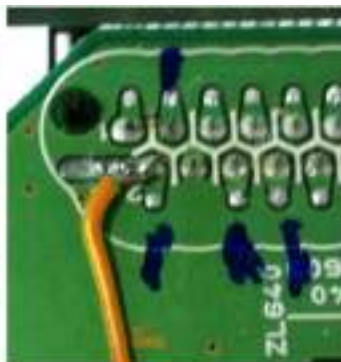
Installation

Connection with the original button

① Divide the bottom part of the head unit before soldering.



② Soldering point – connect to the pin#3 of the POWER cable.



Solder the opposite end of the orange cable in the POWER cable.

AV-mode switching by factory button



AV-Mode
Change

Button	Press	Function
AV-Mode change	Press long	Changing modes like this sequence; NAVI-AV1-AV2-AV3-NAVI-... without the genuine screen.
	Press short	Getting back to the genuine screen.
Rest of the buttons	Press short	Directly changing from NAVI/AV modes to the genuine screen. (except for blue ones)

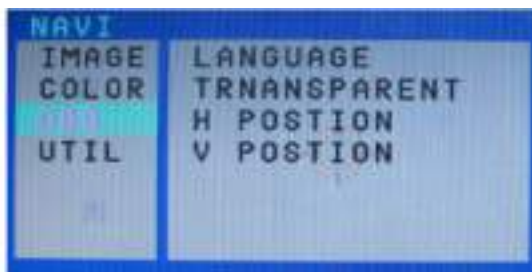
OSD MENU – input specific settings

To enter OSD MENU: Press "MENU" button on the remote control while in the corresponding in input. Settings are for the input from you MENU has been entered and which is running in the background.

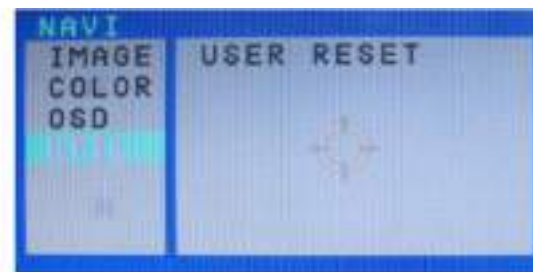
Analog RGB



Analog RGB



Analog RGB



Video



Video



Video



IMAGE

- BRIGHTNESS
- CONTRAST
- SATURATION
- HUE
- SHARPNESS
- USER IMAGE: Choose an option among 4 prepared color shades.

OSD

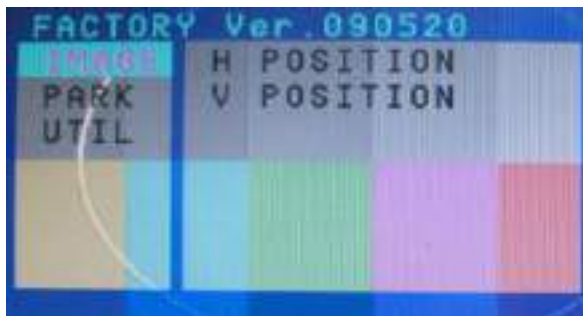
- LANGUAGE: Choosing OSD language while using Touch OSD (English and Chinese only)
- TRANS: Transparency control of the OSD background
- H POSITION: Horizontal movement of the OSD window
- V POSITION: Vertical movement of the OSD window

UTIL

- USER RESET: OSD MENU RESET

Factory OSD menu – general settings

Enter FACTORY OSD menu by pressing ◀ button 2 seconds long or ▲ -> ▼ -> ▲ -> MENU buttons of the remote control



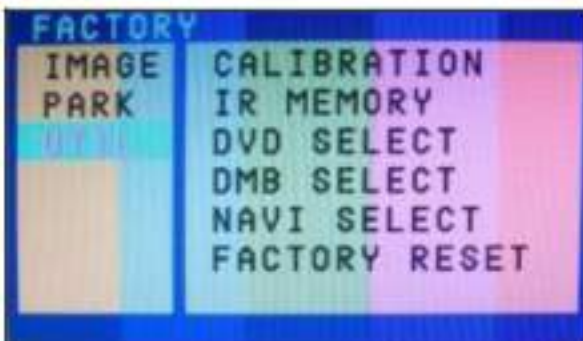
IMAGE

- H POSITION: Horizontal picture position
- V POSITION: Vertical picture position



PARK

- PARK ENABLE: Activation or Deactivation of guide-lines for R-CAM input
- PARK SETUP: Adjust position of guide-lines (see next page)

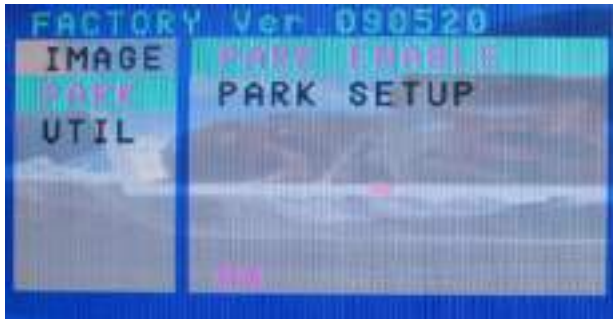


UTIL

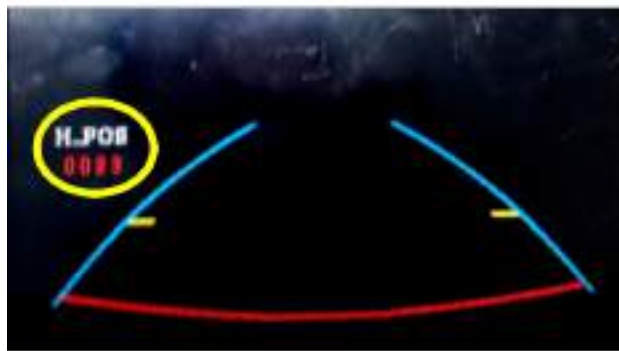
Menu items CALIBRATION, IR MEMORY, DVD TYPE, DMB TYPE and NAVI SELECT are not supported functions.

FACTORY RESET: Reset all values to factory defaults

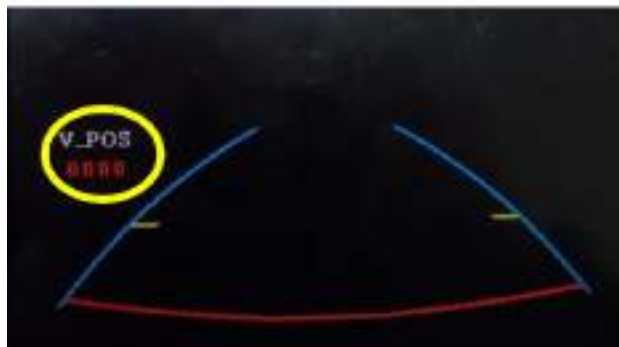
R-CAM input guide-lines



① Enable guide-lines under menu item "PARK ENABLE". Set to "ON" (factory default – ON)



② Choose menu item PARK SETUP. Adjust horizontal position of the guide-lines while H_POS is shown.



③ After adjusting horizontal position, press OK on the remote control. Adjust vertical position of the guide-lines while "V-POS" is shown.

Troubleshooting

Q. I can not switch A/V sources.

A. Check IR or Ground cable connection. Check LED lamps in the interface, if it is not on, check power cable.

Q. All I got on the screen is black.

A. Check second LED lamp of the interface is on, if not, check A/V sources connected are working well.
(Second lamp indicates AV sources connected works well.) Check interface connection has been done well.

Q. Displayed image color is not proper. (too dim or not suitable color)

A. Try to select "INITIAL" in OSD menu, if it does not work, inform the manufacturer.)

Q. Rear camera image does NOT appear.

A. Set DIP switch #7 in "ON"

Q. Unwanted A/V mode is displayed. (A/V source switching order : OEM->RGB->AV1->AV2->AV3)

A. Check DIP Switch Setting.

Q. OEM image is not displayed.

A. Check interface's LCD In/Out cable connection. If the status keeps on, inform the manufacturer.

Q. Screen only displays white like left picture.

A. Check LCD out cable is connected well, if this status keeps, inform the manufacturer.